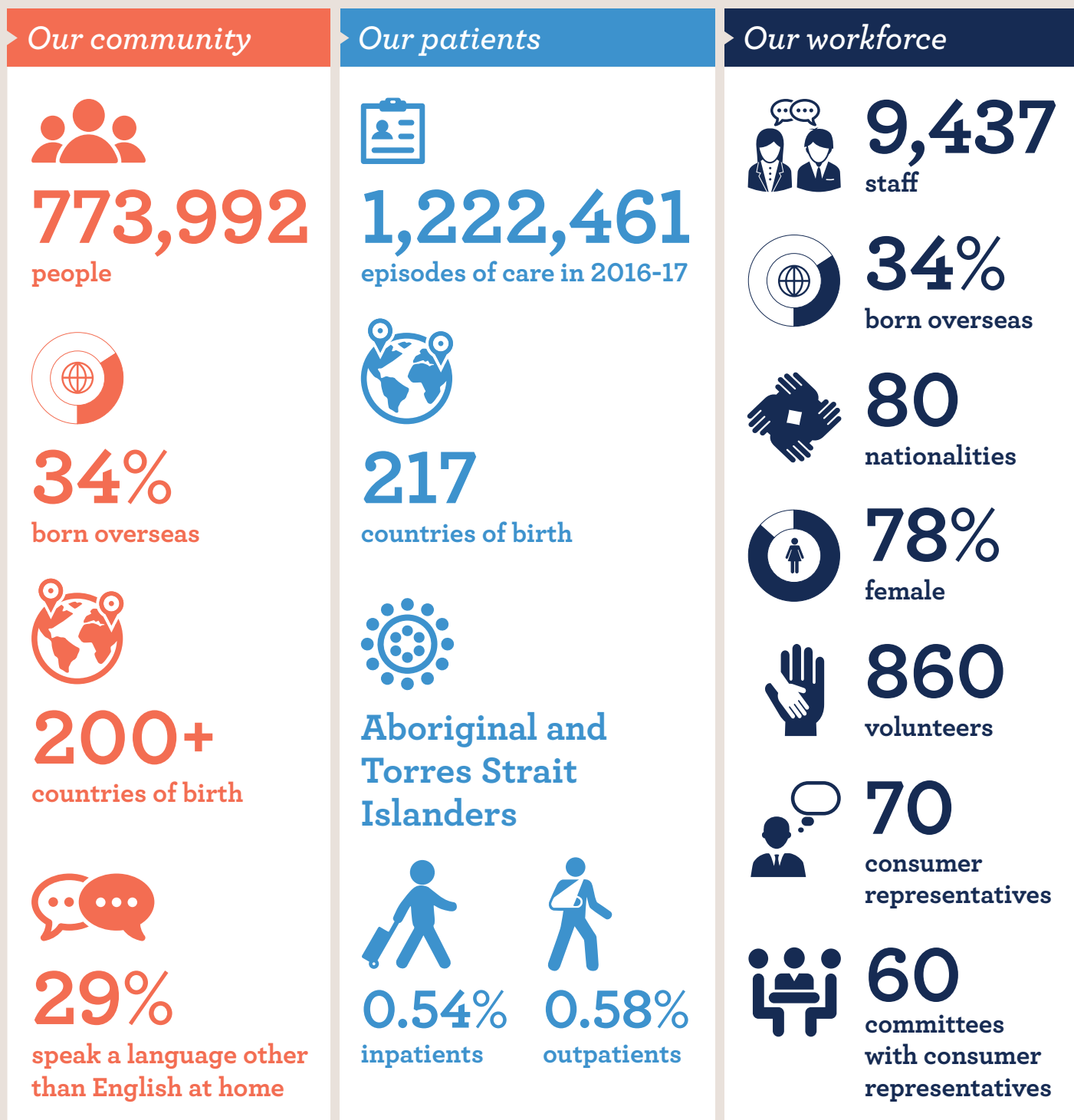


# Supporting, celebrating and responding to a diverse community

At Eastern Health, just over one in four patients admitted to our hospitals (26 per cent) originates from a country where English is not the predominant language. Furthermore, the proportion of people in our catchment aged 60 and over continues to increase. Our catchment has over 20 per cent more people in the over 60 age group than the average for metropolitan Melbourne. The diverse nature of our patient population presents us with many challenges, as well as opportunities, as we seek to deliver innovative models of care that best meet their varying needs.



Sources: 2016 inpatient, outpatient, emergency patient data, excluding Healesville Hospital and Yarra Valley Health; Victoria in Future 2015