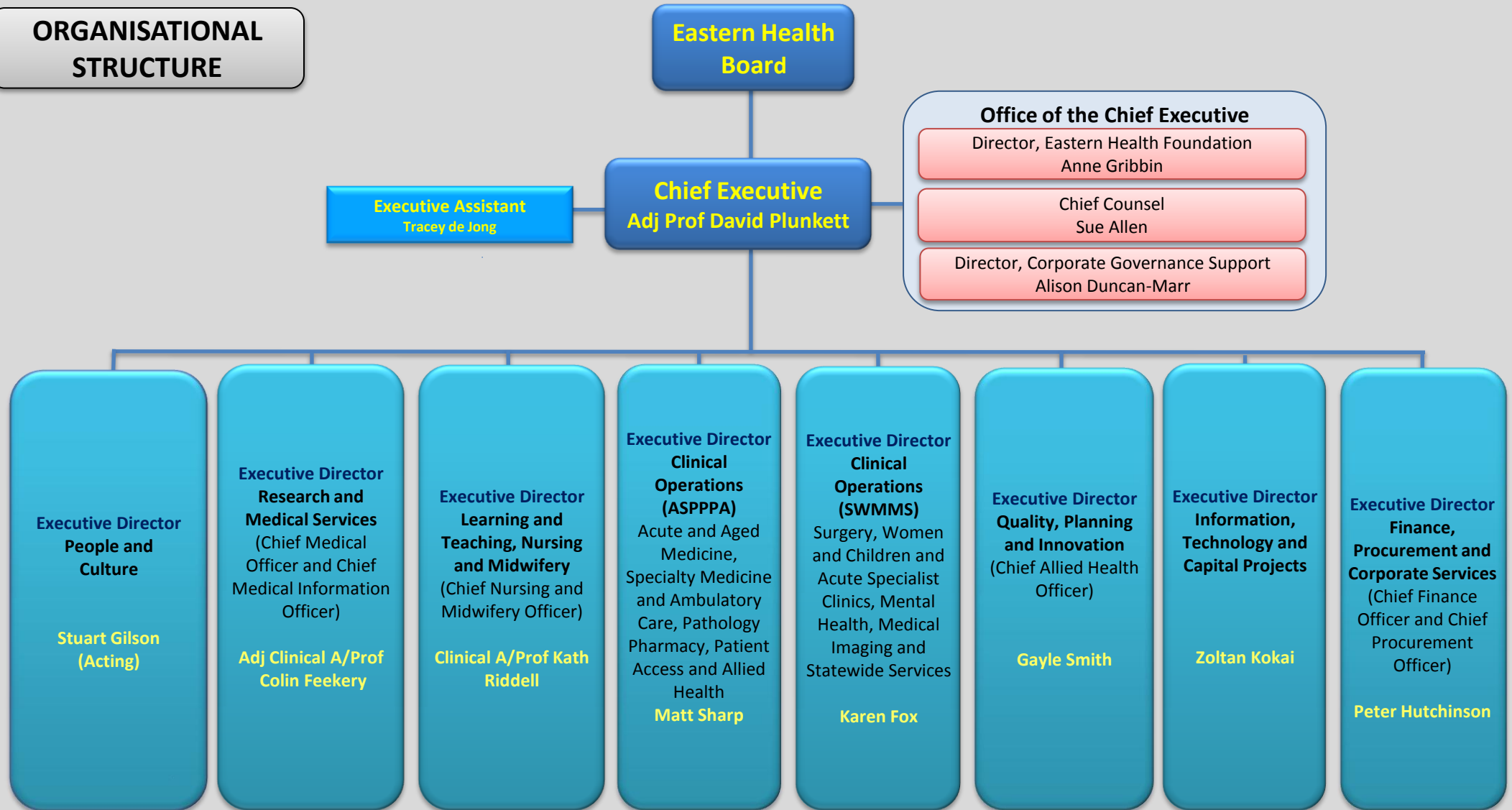
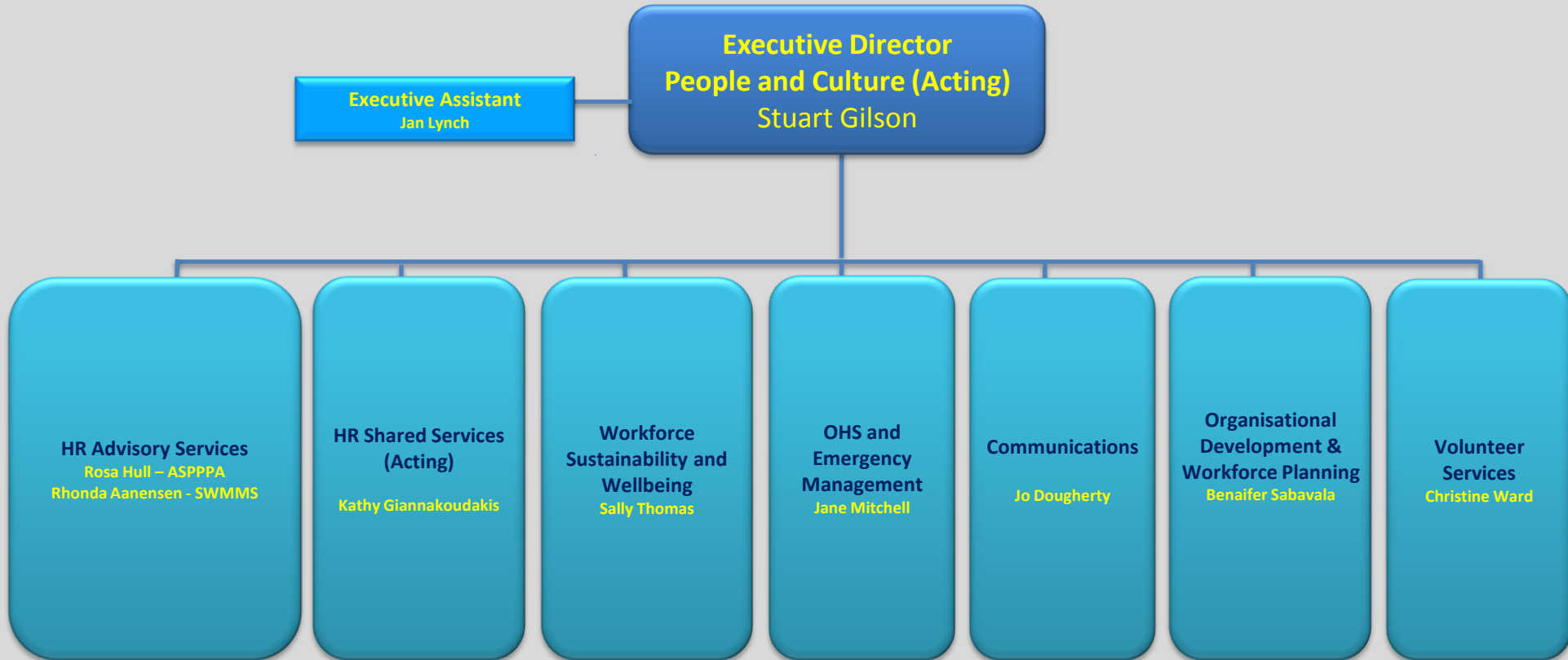


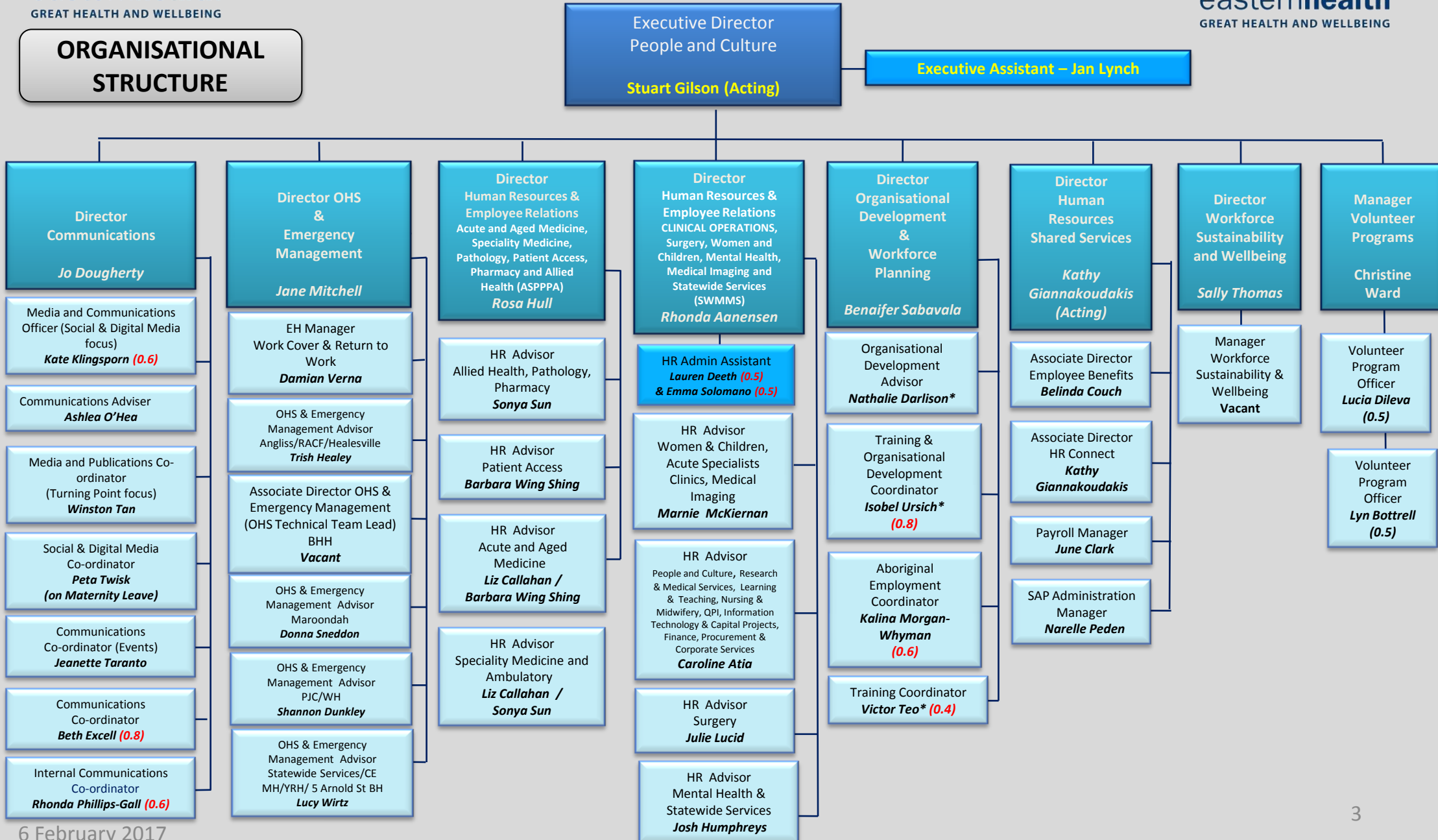
**ORGANISATIONAL  
STRUCTURE**



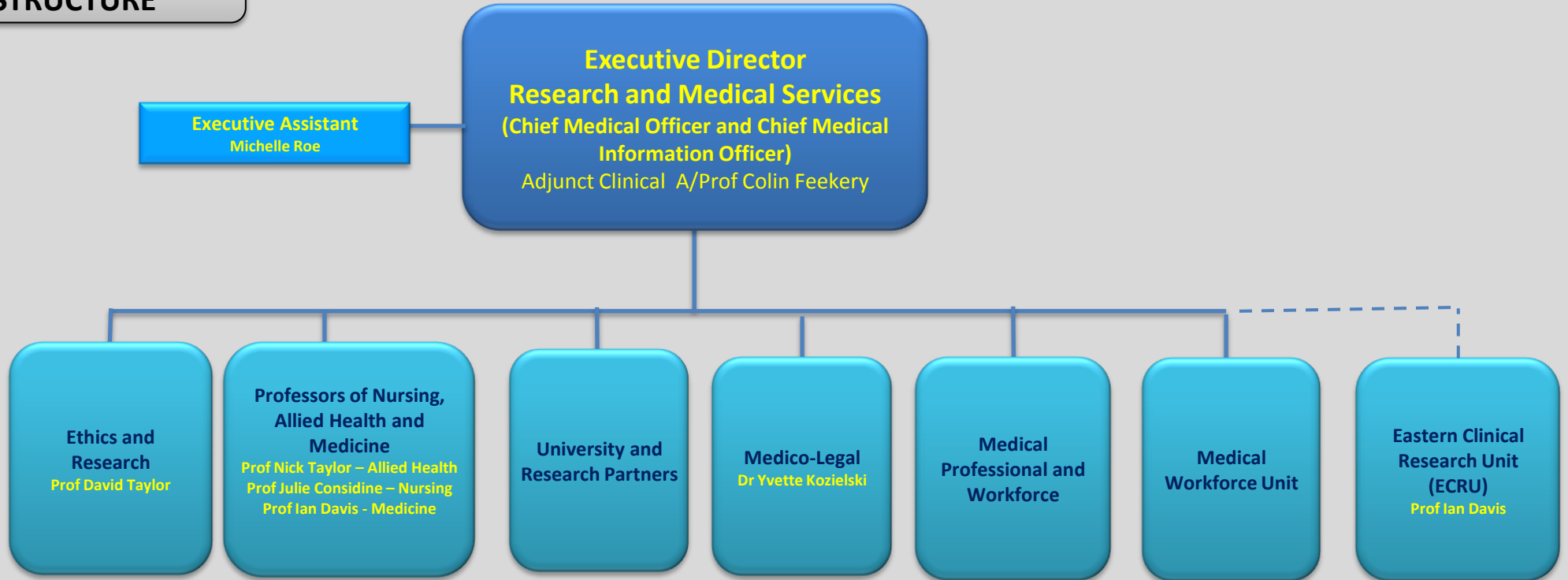
**ORGANISATIONAL  
STRUCTURE**



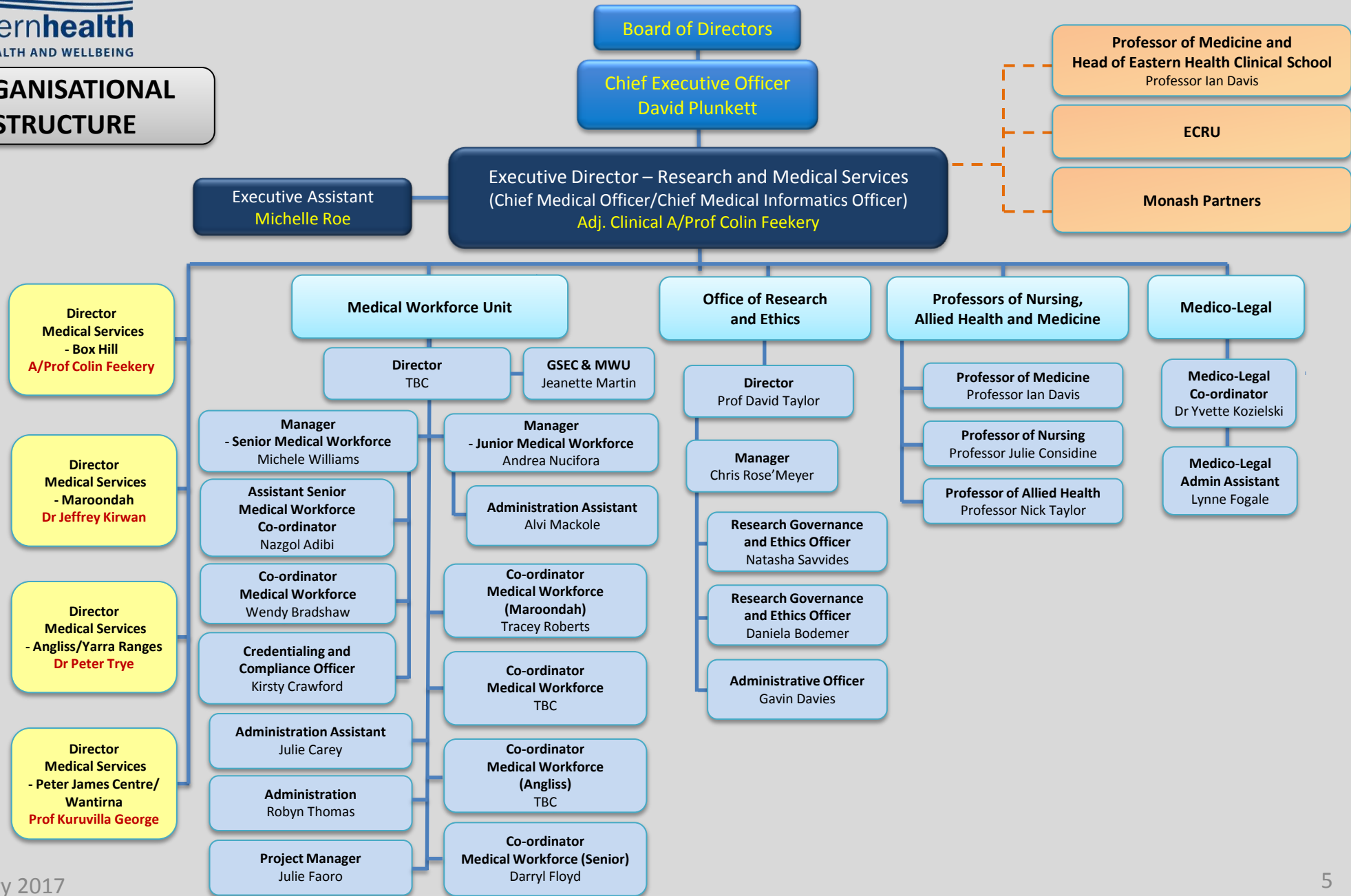
**ORGANISATIONAL  
STRUCTURE**



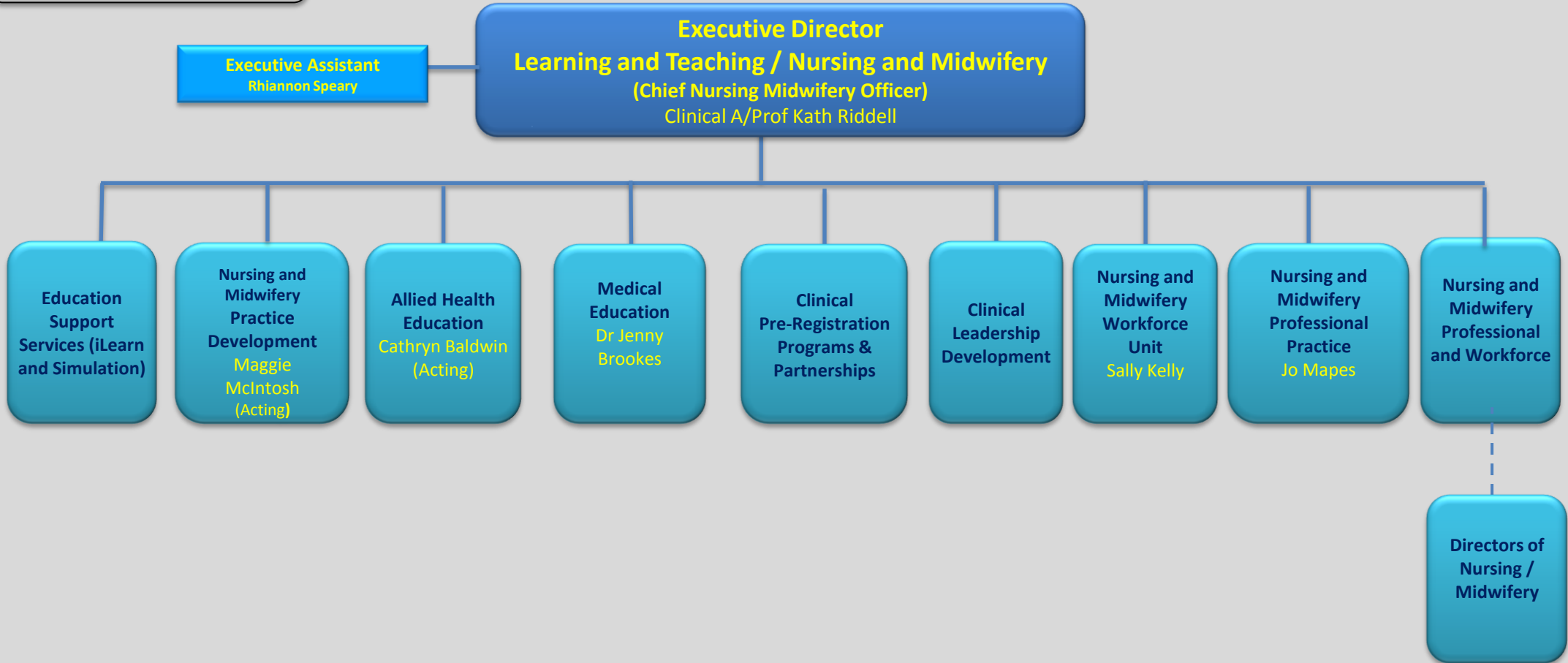
**ORGANISATIONAL  
STRUCTURE**



**ORGANISATIONAL  
STRUCTURE**



**ORGANISATIONAL  
STRUCTURE**



**ORGANISATIONAL  
STRUCTURE**

**Executive Director  
Clinical Operations (ASPPA)**  
Acute and Aged Medicine, Specialty Medicine and  
Ambulatory Care, Pathology, Pharmacy, Patient Access  
and Allied Health  
Matt Sharp

**Executive Assistant**  
Jan Lynch

**Acute and Aged Medicine**  
Emergency  
General Medicine  
Geriatric Evaluation and  
Management  
Rehabilitation (inpatient)  
Palliative Care  
Transition Care  
Residential Aged Care Services  
ACAS (including Rapid Outreach  
Response)  
Residential In-reach  
Chronic Care  
**John Ferraro – PD**  
**Prof Peteris Darzins**  
- ECD Aged Medicine  
**Dr Evan Newnham – ECD Acute  
Medicine (Acting)**

**PJC/Wantirna**  
**John Ferraro – Site Director**

**Specialty Medicine and Ambulatory Care**  
Cancer Services  
Renal, Cardiology  
Dermatology, Endocrinology  
Gastroenterology  
Haematology/Haemostasis and  
Thrombosis  
Infectious Diseases and IPAC  
Neurosciences, Respiratory  
Rheumatology  
Eastern@Home and District Nursing  
Service  
Sub-Acute Clinics  
Community Health  
Community Rehabilitation  
Aboriginal Health  
**Shannon Lang – PD**  
**Prof Lawrie McMahon – ECD Spec Med**  
**Prof Mary O'Reilly – ECD Amb.**

**Maroondah**  
**Shannon Lang – Site Director**

**Pathology**  
Core Laboratory  
Microbiology  
Anatomical Pathology  
Collection Services  
Blood  
Flow Cytometry  
**Pauline McGrath**  
Program Director

**Pharmacy**  
Clinical Services  
Quality Use of  
Medicines  
Procurement  
Medicines Evaluation  
Systems Pharmacist  
All Sites  
**Nick Jones**  
Program Director

**Patient Access**  
Inpatient Access  
Ambulatory  
Access  
ASERT  
**Jenelle Linton**  
Director

**Allied Health**  
Physiotherapy  
Occupational Therapy  
Social Work  
Speech Pathology  
Dietetics  
Language Services  
Psychology  
Podiatry  
Spiritual Care  
**Anita Wilton**  
Director

**INTERIM ORGANISATIONAL  
STRUCTURE  
ASPPPA**

**ACUTE AND AGED MEDICINE PROGRAM**

**Executive Clinical Director  
Acute Medicine (Acting)  
Dr Evan Newnham**

**Program Director Acute & Aged  
Medicine & Site Director Peter James  
Centre & Wantirna Health  
John Ferraro**

**Executive Clinical Director  
Aged Medicine  
Prof Peteris Darzins**

**Associate Program  
Director  
Emergency  
General Medicine  
Box Hill Hospital  
Andrew Shelton  
(Acting)**

**Associate Program  
Director  
Emergency  
General Medicine  
DON Maroondah  
Hospital  
Rhonda Beattie**

**Associate  
Program Director  
Emergency  
General Medicine  
DON/M  
Angliss Hospital  
Jenny Dempster**

**Associate Program  
Director  
Residential Aged  
Care Services  
DON Peter James  
Centre  
Fiona Quigley**

**Associate Program  
Director Geriatric  
Evaluation  
Management  
Palliative Care  
DON  
Wantirna Health  
Kathy Marshall**

**Associate  
Program Director  
Rehabilitation &  
Sub Acute Access  
Jo Holt**

**APD Chronic Care,  
GEM@Home, ACAS,  
Community Health\* &  
Aboriginal Health\*  
(\*dual reporting for CH & AHT  
to PD SM&AC)  
Michele Goding**

**Associate Director  
Acute & Aged  
Medicine Service  
Integration  
Ann Yeomanson**

**Wards, Departments, Services**

**Emergency  
Departments**  
Box Hill  
Maroondah  
Angliss

**General Medicine**  
Box Hill 5.1, 6.1, 6.2  
Maroondah 1E, 2N  
Angliss 2E,  
Healesville acute  
medical patients

**GEM**  
Ward 9.1 - BHH  
Wantirna North  
Maroondah 2E  
Angliss 1W  
Healesville GEM  
patients

**Rehabilitation**  
PJC East  
PJC Centre (includes  
GEM)  
Angliss 1N

**Palliative Care**  
Wantirna East  
Palliative Care  
CNC  
Chair Palliative  
Care Nursing

**Residential Aged  
Care Services**  
Edward Street  
Nursing Home,  
Mooroolbark,  
Northside,  
Monda Lodge

**Aged & Community  
Services**  
Transition Care  
Program (Beds and  
Community)  
Residential In-Reach,  
GEM@Home, ACAS,  
Advanced Care  
Planning



**INTERIM ORGANISATIONAL  
STRUCTURE  
ASPPPA**

**SPECIALTY MEDICINE AND  
AMBULATORY CARE PROGRAM**

**Executive Clinical Director  
Specialty Medicine  
Prof Lawrence McMahon**

**Program Director Specialty Medicine  
& Ambulatory Care, Site Director  
Maroondah Hospital  
Shannon Lang**

**Executive Clinical Director  
Ambulatory Care & Infection  
Prevention & Control  
Prof Mary O'Reilly**

**APD Specialty Medicine**  
Neurosciences  
Cardiology  
Renal  
Endocrinology  
Dermatology  
Infectious Diseases  
Box Hill Hospital  
**Dean Jones**

**APD Specialty Medicine**  
Oncology  
Haematology  
Gastroenterology/  
Endoscopy  
Respiratory  
Rheumatology  
Maroondah Hospital  
**Ged Millard**

**Ambulatory Care  
APD/DON**  
HITH & DNS, ASERT, PAC,  
TCP\* & RIR\* (*\*dual reporting  
for TCP & RIR to PD A&AM*)  
**Julie Evans**

**Ambulatory Care  
APD/Allied Health  
Community  
Rehabilitation Programs,  
Ambulatory Specialist  
Clinics,  
Ambulatory Access, VPRS  
PJC  
**Erin Wilson****

**Associate Director  
Infection  
Prevention &  
Control  
IPAC Clinical  
Nurse Consultants  
**Leanne Houston****

**Wards, Departments, Services**

**Wards**  
Box Hill 9.2, 8.1, 4.3,  
4.1, 2.2  
Maroondah 3N, Day  
Oncology  
Dialysis Services

**Services**  
Cardiac Catheter Lab  
Respiratory Lab  
Sleep Lab  
Neurodiagnostics  
Community Rehabilitation  
Program

**Ambulatory Services**  
HITH & DNS, ASERT,  
PAC, Community  
Health  
Aboriginal Health  
ECASA  
GP Liaison

**Clinic Services**  
Diabetes Education  
Ambulatory Specialist  
Clinics  
Specialty Medicine clinics

**INTERIM ORGANISATIONAL  
STRUCTURE  
ASPPPA**

**PATHOLOGY PROGRAM**

**Program Director  
Pathology  
Pauline McGrath**

**Associate Director Core  
Laboratories & New  
Projects  
Tony O'Neill**

**Associate Director  
Microbiology  
and ICT Projects  
Sue Lloyd-Jones**

**Associate Director  
Anatomical  
Pathology Mortuary  
& Inventory Mgt  
Sandra Hickman**

**Consumer &  
Business Manager  
Jennifer Antonino**

**Patient Collections  
Services Manager  
Purvi Dave  
(Acting)**

**INTERIM ORGANISATIONAL  
STRUCTURE  
ASPPPA**

**PHARMACY PROGRAM**

**Program Director  
Pharmacy  
Nick Jones**

**Associate  
Director Clinical  
Services  
Olivia Rofe**

**Acting Associate  
Director Quality  
Use of Medicines  
Sarah  
Fotheringham**

**Procurement  
Manager  
Dharam Singh**

**Medicines  
Evaluation  
Pharmacist  
Amy Lau**

**Associate  
Director  
Pharmacy MH  
Lauren Lawlor**

**Associate  
Director  
Pharmacy AH /  
WH / PJC  
Warren Boyd**

**Systems  
Pharmacist  
Maryanne  
Molenaar**

**INTERIM ORGANISATIONAL  
STRUCTURE  
ASPPPA**

**PATIENT ACCESS**

**Patient Access  
Director  
Jenelle Linton**

**Integrated Access Unit  
Acute Access**

**Patient Transport  
Non Emergency  
Bookings**

**Telemedicine  
Manager**

**Chris Stott**

**INTERIM ORGANISATIONAL  
STRUCTURE  
ASPPPA**

**ALLIED HEALTH**

**Allied Health  
Director  
Anita Wilton**

**Allied Health  
Associate Director  
(Physiotherapy)  
Program Lead  
Rehabilitation  
Grant Scroggie**

**Allied Health  
Associate Director  
(Occupational  
Therapy)  
Program Lead  
Emergency &  
General Medicine  
Jude Boyd**

**Allied Health  
Associate Director  
(Social Work)  
AH Program Lead  
Women & Children  
Tass  
Kostopoulos**

**Allied Health  
Associate Director  
(Speech Pathology)  
Program Lead  
GEM  
Christine Stone**

**Allied Health  
Associate Director  
(Dietetics)  
Program Lead  
Specialty Medicine  
Erin Brennan**

**Manager  
Language  
Services  
Cynthia Zupan**

**Manager  
Psychology  
Dr Alison Wilby**

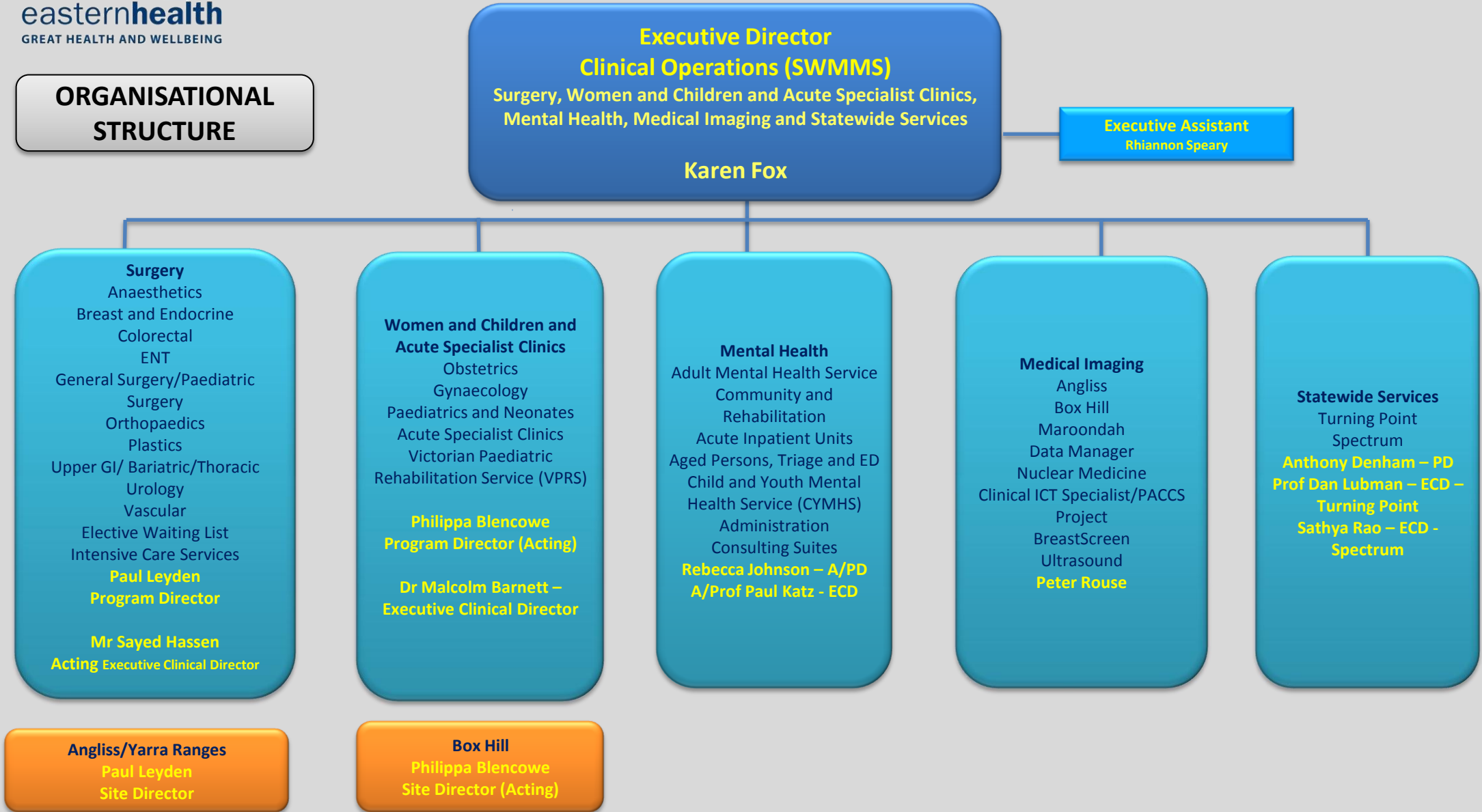
**Manager  
Podiatry  
Katrina Richards**

**Manager  
Workforce  
Cathryn Baldwin  
(Acting)**

**Manager  
Spiritual Care  
Kate Eve**

**Implementation  
Manager AH  
Assessment  
Jane Sheats**

**ORGANISATIONAL  
STRUCTURE**



**SURGERY PROGRAM**

**INTERIM ORGANISATIONAL STRUCTURE**

**Executive Director, Clinical Operations  
Surgery, Women & Children, Mental Health,  
Medical Imaging & Statewide Services  
KAREN FOX**

**Executive Director, Research  
& Medical Services,  
CMIO & CMO  
ADJ CLIN A/PROF COLIN  
FEEKERY**

**Executive Director, Learning  
& Teaching, Nursing &  
Midwifery (Chief Nursing  
and Midwifery Officer)  
CLINICAL A/PROF KATH  
RIDDELL**

**Program Director Surgery Program  
Site Director, Angliss Hospital, Healesville Hospital  
& Yarra Valley Health and Yarra Ranges Health  
PAUL LEYDEN**

**Executive Clinical Director  
Surgery Program  
PROF. MICHAEL GRIGG  
(MR SAYED HASSEN – Acting)**

**Elective Surgery Access Manager  
Eastern Health  
  
Lisa Mitchell**

**Associate Program Director  
Surgery  
Angliss  
General Surgery, Paediatric Surgery. Portfolio  
of Gynaecology & Yarra Ranges  
(portfolio of Yarra Ranges Health &  
Healesville Hospital)  
  
Georgia Gill**

**Associate Program Director,  
Surgery  
Maroondah  
Orthopaedics, Plastics, Breast,  
Endocrine  
  
Ashley Wheeler**

**Associate Program Director  
Surgery  
Box Hill  
Colorectal, ENT Upper  
GI/Bariatric/Thoracic, Urology, Vascular  
  
Christine Lamotte**

**Director of Nursing and  
Operations – Yarra Ranges  
Health, Healesville Hospital  
and Yarra Valley Health  
  
Pam Hughes**

**Preadmission Clinics  
Angliss Hospital, Box Hill  
Hospital, Maroondah  
Hospital  
  
Surgical Liaison Nurses**

**Operating Theatres  
CSSD  
2W  
Day Procedure Unit  
2SAC**

**Operating Theatres  
CSSD  
3E  
1N  
ICU  
Day Procedure Unit**

**Operating Theatres  
(including Endoscopy)  
CSSD  
7.1  
7.2  
8.2  
ICU  
Surgical Admissions & Transit  
Lounge  
Surgical CNC**

**INTERIM ORGANISATIONAL  
STRUCTURE**

**WOMEN & CHILDREN AND ACUTE  
SPECIALIST CLINICS PROGRAM**

**Executive Director, Clinical Operations  
Surgery, Women & Children, Mental Health, Medical  
Imaging & Statewide Services  
KAREN FOX**

**Executive Director, Medical  
Services & Research,  
CMIO & CMO  
ADJ CLIN A/PROF COLIN FECKERY**

**Director of Nursing  
PHILIPPA BLENCOWE**

**Program Director  
Women & Children  
Site Director, Box Hill Hospital  
PHILIPPA BLENCOWE (ACTING)**

**Executive Clinical Director  
Women & Children and Acute Specialist  
Clinics  
DR MALCOLM BARNETT**

**Associate Program  
Director  
Acute Specialist Clinics  
AARON SHERGIS**

**Associate Program  
Director  
Women & Children  
Angliss Hospital & Yarra  
Ranges  
Lynne Stewart**

**Associate Program  
Director, Women &  
Children  
Box Hill Hospital  
Janet Horman**



**MENTAL HEALTH PROGRAM**

**INTERIM ORGANISATIONAL STRUCTURE**

**Executive Director, Learning & Teaching, Nursing & Midwifery (Chief Nursing Officer & Midwifery Officer)**  
**CLINICAL A/PROF KATH RIDDELL**

**Executive Director, Clinical Operations Surgery, Women & Children, Mental Health, Medical Imaging & Statewide Services**  
**KAREN FOX**

**Executive Director, Research & Medical Services, CMIO & CMO**  
**ADJ CLIN A/PROF COLIN FEEKERY**

**Executive Director, Quality, Planning and Innovation (Chief Allied Health Officer)**  
**GAYLE SMITH**

**Program Director Mental Health Program**  
**REBECCA JOHNSON - Acting**

**Executive Clinical Director Mental Health Program**  
**A/PROF PAUL KATZ**

**Associate Program Director Adult Mental Health Acute IPUs**  
**Michelle Orr - Acting**

**Clinical Director Adult Mental Health Service**  
**A/Prof Paul Katz**

**Associate Program Director Adult Mental Health Services Community**  
**Brad Wynne**

**Associate Program Director Aged Mental Health Service & Access**  
**Joyce Goh - Acting**

**Clinical Director Aged Mental Health Service**  
**Prof. Kuruvilla George**

**Associate Program Director Child & Youth Mental Health Service**  
**Lynne Allison - Acting**

**Clinical Director Child & Youth Mental Health Service**  
**Peter Jenkins**

**DON MHP**  
**Michele Orr - Acting**

- Upton House IPU
- Maroondah IPU1
- Maroondah IPU2

- CE CCT & AMHS BIT
- OE CCT
- Rehabilitation Services (MSTs / CCUs / PARCs)
- Dual Diagnosis & Service Development

- South Ward IPU
- APMHS Community (ICT / APAT)
- Adult Psychiatric Triage, CL, PAPU
- Adult CATT

- Adolescent IPU
- CYMHS Community (Access, IMT, Group)
- CYMHS Community (EPT, Case Mgt)

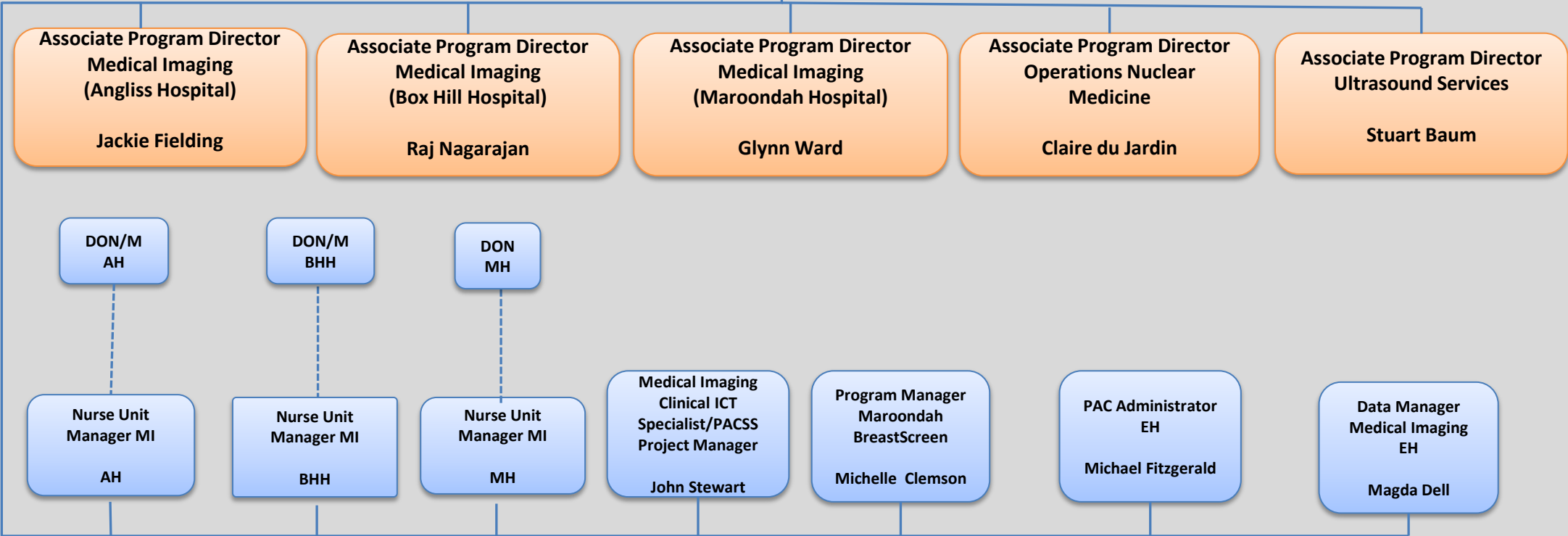
**Director of Allied Health MHP and SWS**  
**Lynne Allison - Acting**

**INTERIM ORGANISATIONAL STRUCTURE**

**MEDICAL IMAGING PROGRAM**

**Executive Director, Clinical Operations  
Surgery, Women & Children, Mental Health, Medical  
Imaging & Statewide Services  
KAREN FOX**

**Program Director  
Medical Imaging  
PETER ROUSE**

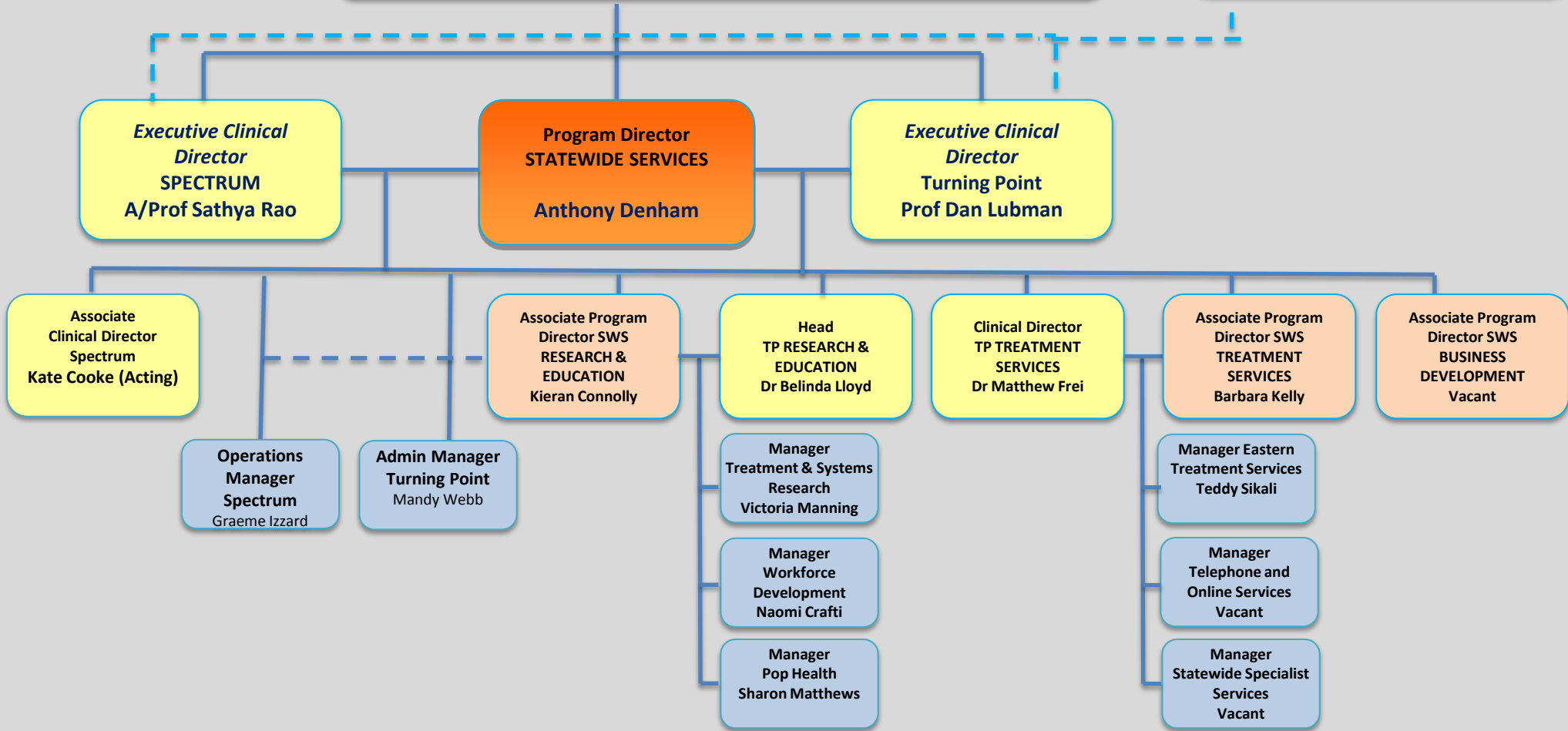


**INTERIM ORGANISATIONAL STRUCTURE**

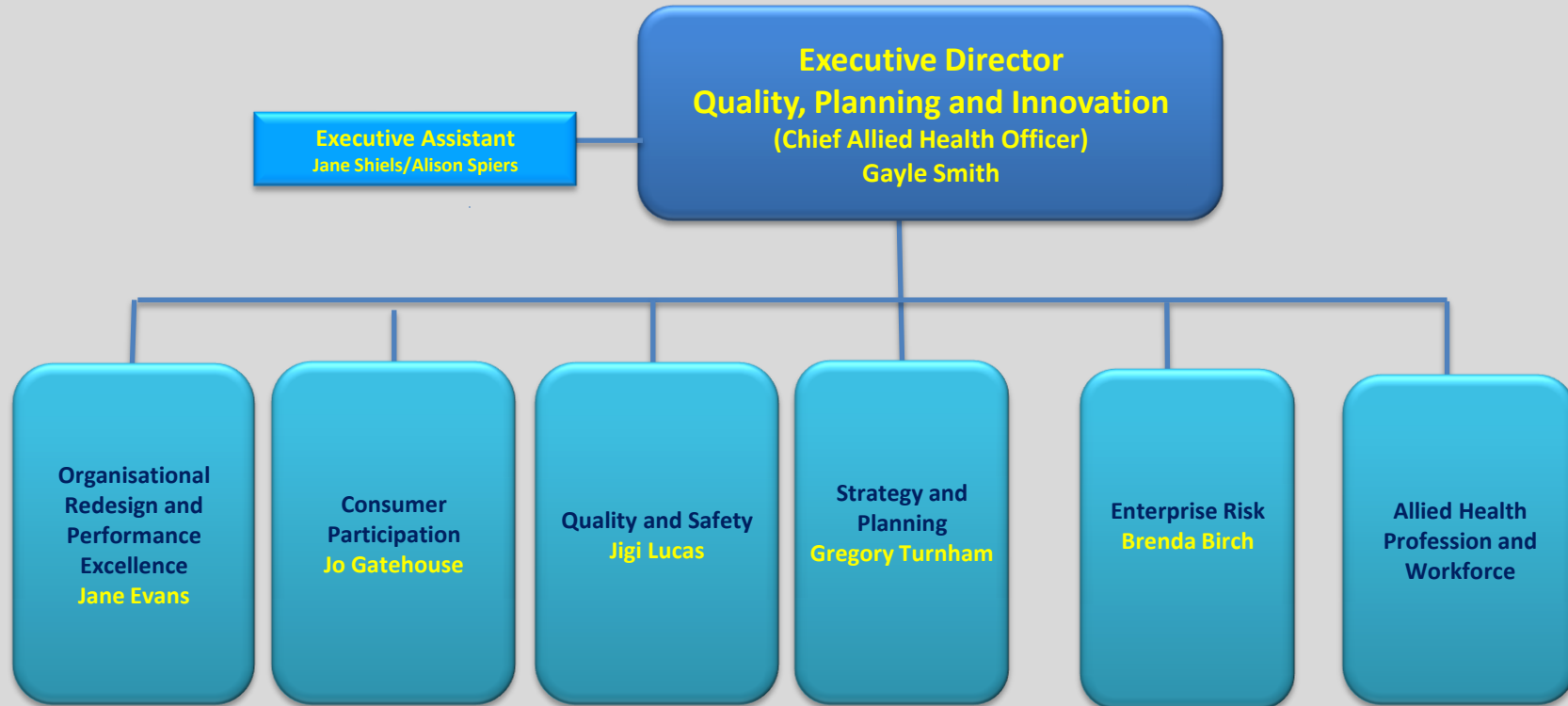
**STATEWIDE SERVICES PROGRAM**

**Executive Director, Clinical Operations  
Surgery, Women & Children, Mental Health, Medical Imaging  
& Statewide Services  
KAREN FOX**

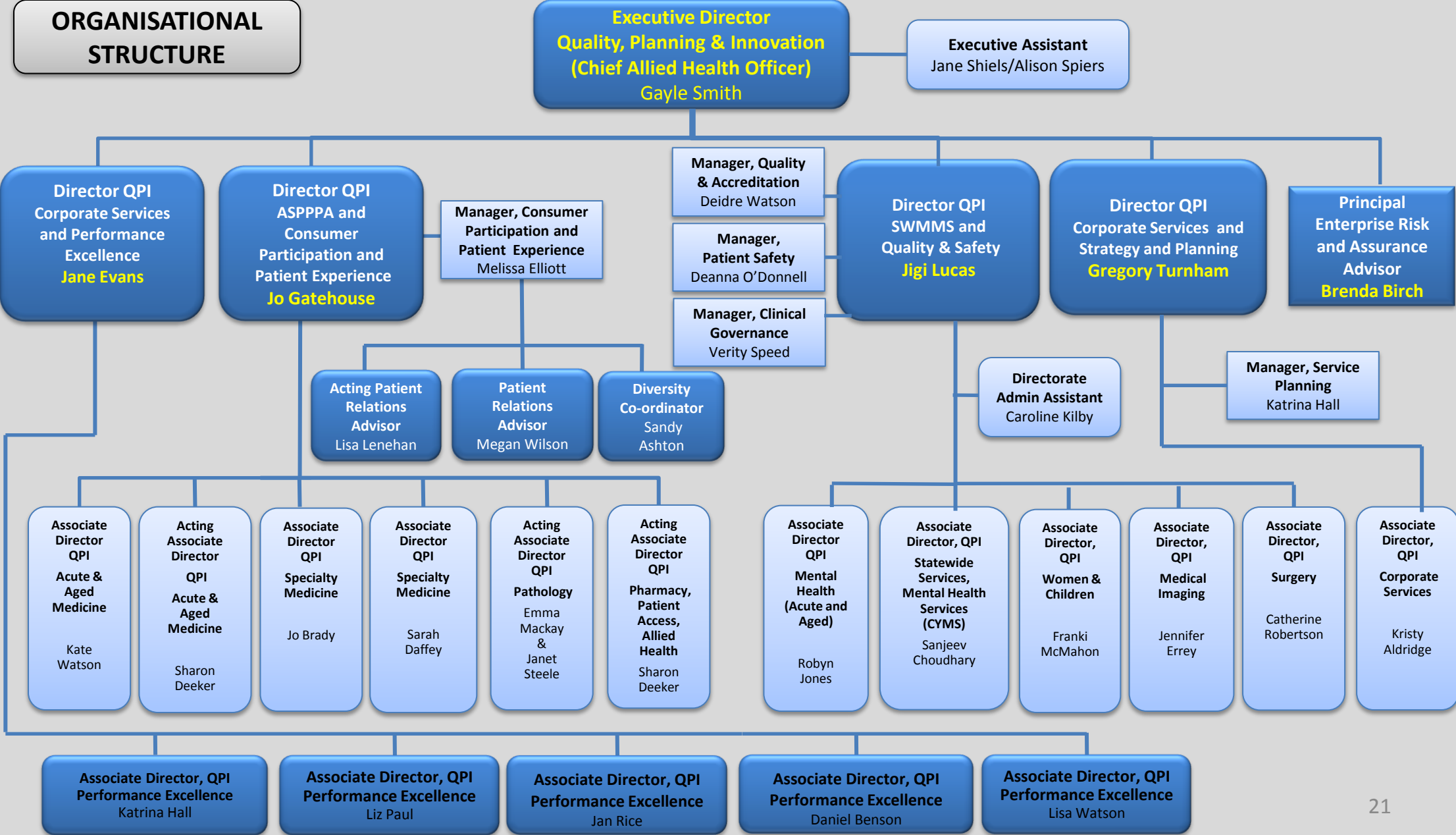
**Executive Director, Research &  
Medical Services,  
CMIO & CMO  
ADJ CLIN A/PROF COLIN FEEKERY**



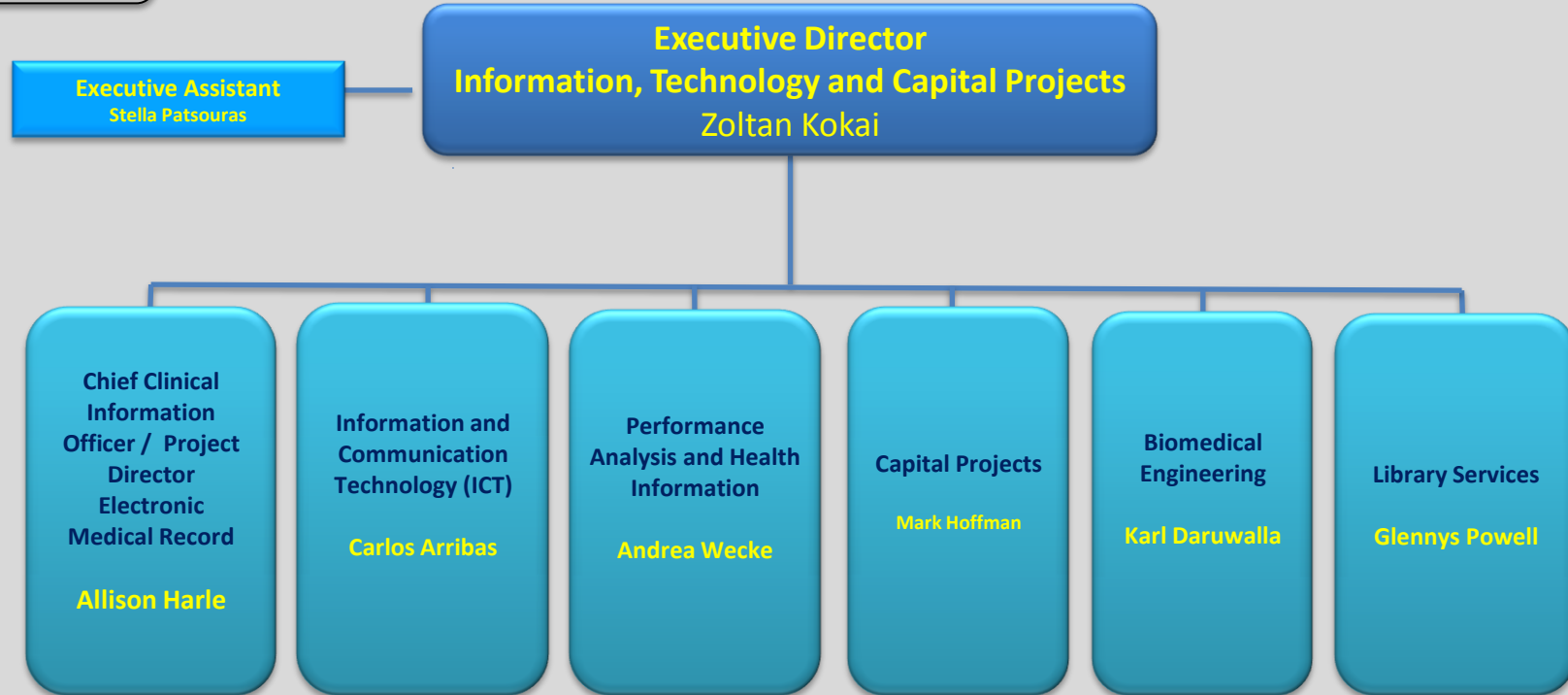
**ORGANISATIONAL  
STRUCTURE**



**ORGANISATIONAL STRUCTURE**



**ORGANISATIONAL  
STRUCTURE**

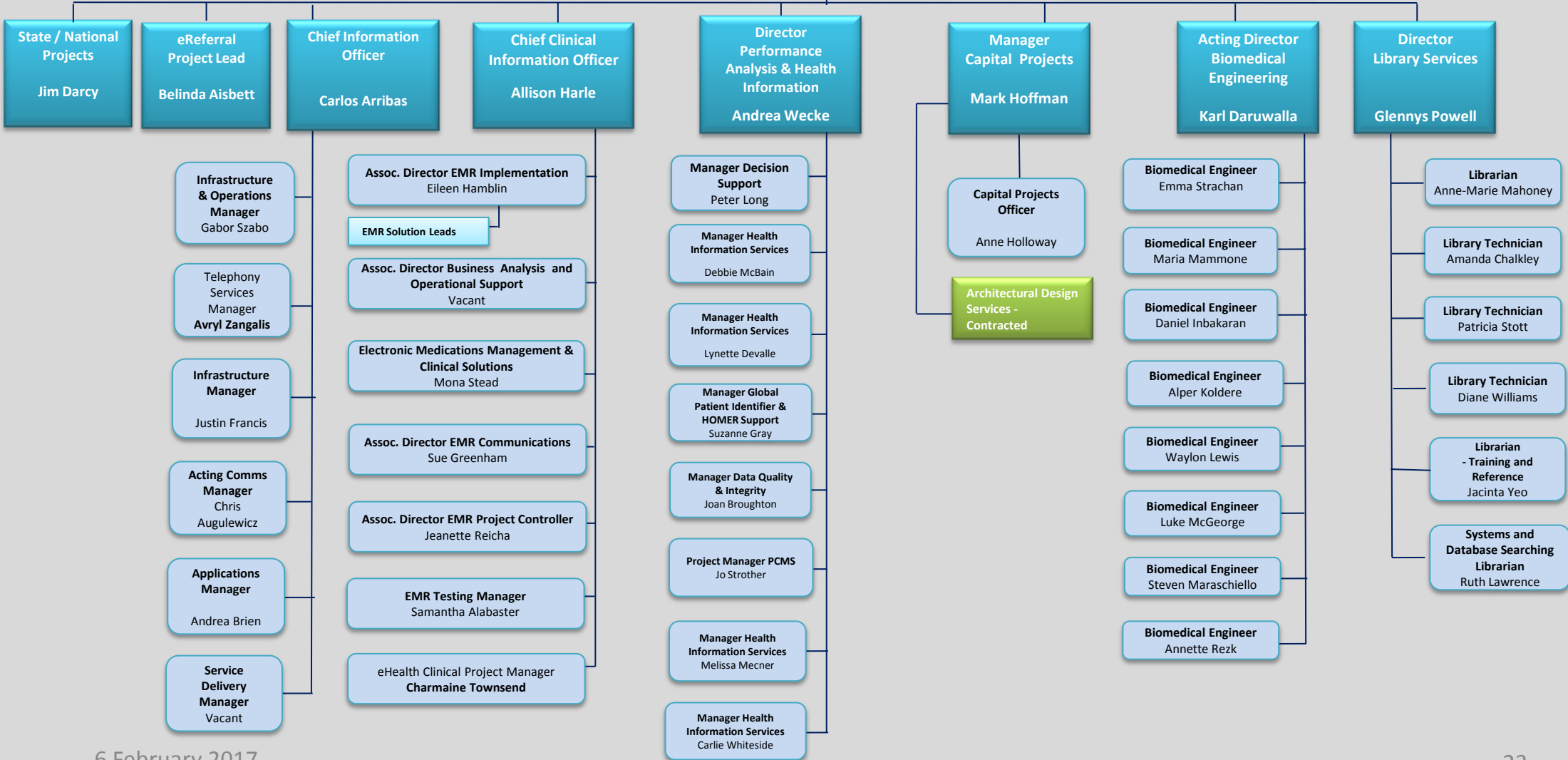


**ORGANISATIONAL  
STRUCTURE**

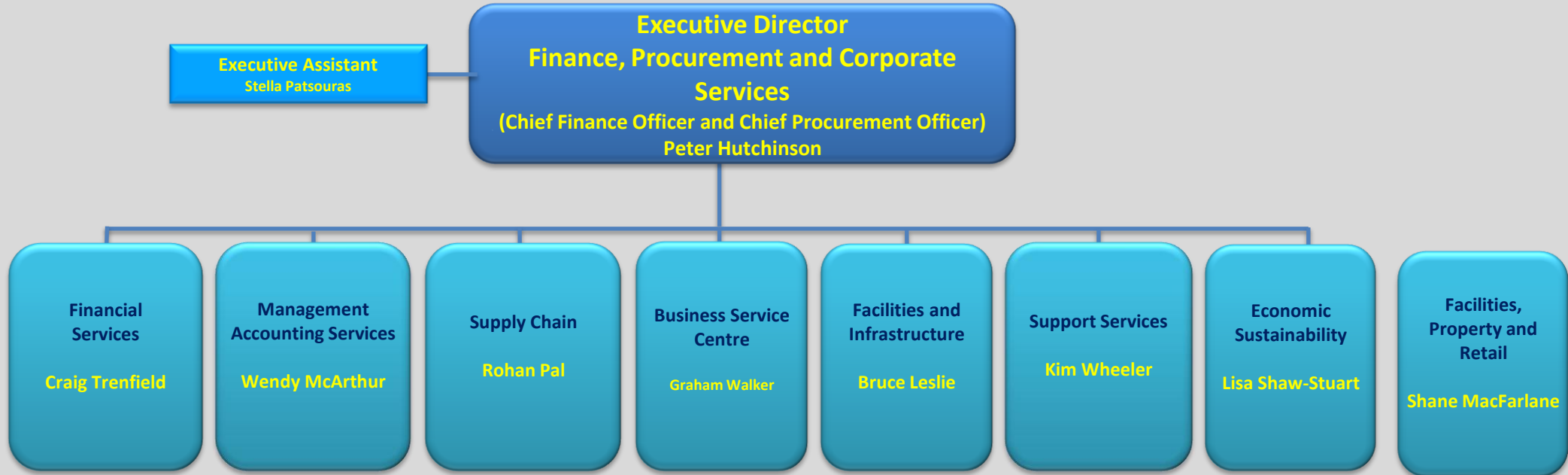
**Executive Director  
Zoltan Kokai**

**Chief Medical Information Officer  
Adj. Clinical A/Prof  
Colin Feekery**

**Executive Assistant  
Stella Patsouras**



**ORGANISATIONAL  
STRUCTURE**





**ORGANISATIONAL  
STRUCTURE**

