

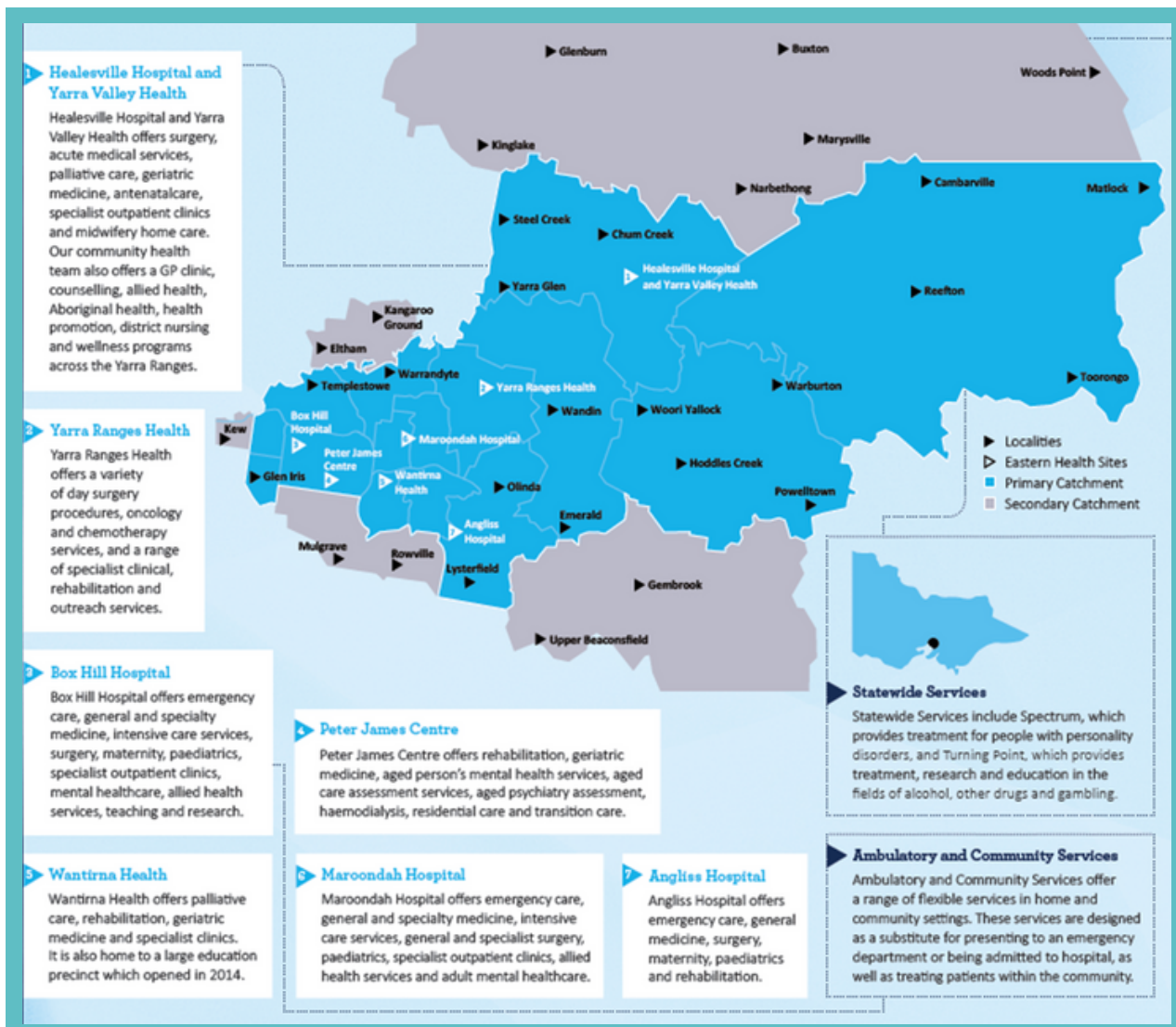
Graduate Nursing & Midwifery Programs



A Snapshot of Eastern Health

Eastern Health is one of Melbourne's largest metropolitan public health services.

We provide a range of emergency, surgical, medical and general healthcare services, including maternity, palliative care, mental health, drug and alcohol, residential care, community health and statewide specialist services to people and communities that are diverse in culture, age, socio-economic status, population and healthcare needs.



About our Graduate Programs

Pathways and Rotations

Eastern Health offer Graduate Nursing & Midwifery Programs in both Pure and Blended pathways.

Pure Pathways	Rotations
General Nursing	2 x 6 month Rotations
Mental Health	2 x 6 month Rotations
Midwifery	Various midwifery areas (12 months)
Blended Pathways	Rotations
Combined Nursing & Mental Health	2 x 6 month Rotations
Combined Nursing & Midwifery	Various midwifery areas and 1 x 6 month general nursing rotation (18 months)
Eastern Health & Alexandra District Health (Metro/Rural)	2 x 6 month Rotations (1 at EH and 1 at ADH)

Intakes

Eastern Health offer 3 intakes each year, commencing:

- January
- March
- July

About our Graduate Programs

Contracts

- Graduate contracts are 0.8 EFT (8 days a fortnight) to maintain work-life balance.
- Permanent ongoing employment is offered to all graduates on completion.
- Opportunities for Transition to Specialty Practice Programs on completion.

Clinical Support

- 2 x Orientation Days
- Study Days and Inter-Professional Learning (IPL)
- Preceptors
- Clinical Educators
- Transition to Practice Team

Opportunities

- Honours Programs
- Transition to Practice Graduate Representative Committee
- Peer Support
- Reflective Practice

About our Graduate Programs

Pure Pathways | Clinical Rotation Options

General Nursing Pathway

- Aged Care
- Cardiac
- Community (District Nursing Service)
- Day Surgery
- Dialysis
- Emergency
- Endoscopy
- Geriatric and Evaluation Medicine (GEM)
- Medical
- Neurology
- Surgical
- Paediatrics
- Perioperative
- Rehabilitation
- Renal
- Oncology

Mental Health Pathway

- Adult Inpatient Unit
- Aged Acute Assessment Unit
- Adolescent Inpatient Unit
- Community Care Unit
- AOD Detoxification and Short Term Support Rehabilitation Unit
- Psychiatric Planning and Assessment Unit
- Early Psychosis Team
- Continuing Care Team
- Mental Health Consultation & Liaison Team and Perinatal Emotional Health Service
- AOD Community Services

Midwifery Pathway

Midwifery rotation opportunities

- Birthing Suite
- Postnatal
- Special Care Nursery
- Antenatal Clinic (elective)

Midwifery experience opportunities

- Fetal Monitoring
- Lactation
- EPC (Extended Postnatal Care)

About our Graduate Programs

Blended Pathways | Clinical Rotation Options

Combined Nursing & Mental Health Pathway

Nursing rotation options

- Medical
- Surgical
- Rehabilitation
- Geriatric Evaluation Management

Mental Health rotation options

- Adult inpatient unit

Combined Nursing & Midwifery Pathway

Midwifery rotation opportunities

- Birthing Suite
- Postnatal
- Special Care Nursery
- Antenatal Clinic (elective)

Midwifery experience opportunities

- Fetal Monitoring
- Lactation
- EPC (Extended Postnatal Care)

Nursing rotation opportunities

- Acute Medical or Surgical

Eastern Health & Alexandra District Health Pathway (Metro/Rural)

Eastern Health rotation options

- Options are the same as General Nursing (see page 6)

Alexandra District Health rotation option

- Acute ward (with opportunities to experience Urgent Care Centre, Operating Theatre and Community Health)

Note: For the Alexandra District Health rotation, subsidised fully furnished accommodation is available.

General Pathway

The General Program is 12 months in duration and comprises of two 6 month rotations. Clinical rotations are located in acute, aged medicine, speciality medicine and community settings across the various sites within Eastern Health catchment.

This program is designed to assist new nurses consolidate their general nursing skills and knowledge in a supportive environment. Graduates are provided the opportunity to work in different clinical areas and across different sites, allowing them to expand their skill sets as well as grow in confidence along the way.

There is a large number of clinical rotations available in the general stream; with each clinical rotation in the general pathway offering an opportunity to consolidate general clinical and personal skills as well as developing knowledge and skills directly related to the specific clinical area.

Additionally, there are variety of interprofessional study days to compliment the learnings in the clinical areas.

Mental Health Pathways

Eastern Health offers 2 pathways to experience a mental health graduate nurse program. The first option is known as the P (Pure) mental health program. The second option is known as the PG (blended) program.

The P (Pure) mental health graduate nurse program is designed for the novice nurse wanting to develop their career specifically in Mental Health. This program is designed to consolidate and broaden their experience and knowledge of mental health. It allows for graduate nurses to experience 3 clinical rotations within different areas and age spectrums of mental health.

The PG or blended mental health/general nursing graduate program is designed for novice nurses who want to further explore both a mental health rotation and a general rotation. This program is designed to consolidate general nursing skills, as well as broaden mental health nursing experience and skills.

Formal agreements for Recognition of Prior Learning (RPL) have been established with a number of universities in order to support all novice learners who have completed a mental health transition to practice pathway. Completion of a Mental Health Graduate Nurse Program also allows eligibility to apply to Eastern Health's Mental Health Post Graduate Nurse Program which has been designed to support nurses through their post graduate studies and offer further clinical experience across a variety of mental health community settings.

Midwifery Pathways

Eastern Health offers two Graduate Midwifery pathways.

The first option is known as the Pure Midwifery Program. The second option is known as the Blended Midwifery/Nursing Program.

The Pure Graduate Midwifery Program is 12 months in duration. We offer a range of opportunities such as Birth Suite, Post Natal Ward, Special Care Nursery, Fetal Monitoring Unit, Extended Post Natal Care, Lactation Services, and Antenatal Clinic. Our Pure program gives the Midwifery Graduate at Eastern Health experience across their full scope of practice and is offered at Angliss and Box Hill Hospitals.

The Blended Graduate Midwifery /Nursing Program is available for those with a double degree in Nursing and Midwifery and is 18 months in duration. It includes opportunities in the same areas as Pure Midwifery, plus a 6-month surgical nursing rotation. The Midwifery component is offered at Angliss and Box Hill Hospitals. The nursing component is offered at Angliss, Box Hill or Maroondah Hospitals.

Eastern Health /Alexandra District Health Pathway (Metro/Rural)

Eastern Health has partnered with Alexandra District Health (ADH) to offer a unique and exciting opportunity of both metropolitan and rural nursing during the graduate year.

This pathway is 12-month pathway; including a six-month rotation at Eastern Health in a general nursing rotation and a six-month rotation at ADH in the general medical and surgical ward with opportunities to experience urgent care, operating theatre and community health.

This pathway provides understanding and appreciation for the rewards and challenges of working in a rural health service as well as a metropolitan health service.

Both EH and ADH have tailored support available during each rotation to assist graduates in their transition to both clinical settings.

There is subsidised fully furnished accommodation available at ADH, located next door to the hospital.

Aboriginal and Torres Strait Islander Opportunities

Eastern Health is proud of its significant achievements in the delivery of health care services to the Aboriginal and Torres Strait Islander community. We are committed to closing the gap in health outcomes and life expectancy for Aboriginal and Torres Strait Islander people.

Eastern Health is growing its Aboriginal and Torres Strait Islander workforce within a culturally safe environment, with recognition and support of culturally significant events and the provision of safe spaces for Aboriginal and Torres Strait Islander staff and students to share yarning and social time. Eastern Health encourages the presentation of Aboriginal and Torres Strait Islander people for health treatment, through building relationships and partnerships with, and respect for, the Aboriginal and Torres Strait Islander community.

The Eastern Health Graduate and Aboriginal Cadetship programs, offer Nursing, Midwifery and Allied Health graduates and students with Aboriginal or Torres Strait Islander background, guaranteed interviews and culturally respectful support when applying to Eastern Health for employment. For support with applications, please contact ttp.admin@easternhealth.org.au.

Application Process

Being a public health service we are bound by the rules of PMCV Allocation Placement Service (APS). Therefore, all positions are offered through the matching process in the first instance.

If in the event there are unmatched positions, Eastern Health may recruit outside the PMCV process (following the appropriate timelines and business rules).

All applications must be received online via the job advertisements at Eastern Health careers page [EH-Mercury](#) (under Nursing Professional Opportunities) via the job advertisement.

If applying for the collaborative Alexandra District Health/Eastern Health pathway, please visit the [ADH website](#) for further details.

How to Apply - PMCV Applicants

1. Apply to our Eastern Health job advertisements at [EH-Mercury](#), for 'PMCV Applicants' **and**
2. Apply to [PMCV](#)

Please note: Key dates for the application process are aligned with the PMCV dates. Please refer to the [PMCV website](#) for more information.

How to Apply - Applicants ineligible for PMCV

1. Apply to our Eastern Health job advertisements at [EH-Mercury](#) for 'Applicants ineligible for PMCV Process'

To check your eligibility for PMCV, please see 'Eligibility Criteria' on the [PMCV website](#).

Applications - What to Include

Your Eastern Health Application (EH-Mercury) must include all of the following:

- Cover letter – maximum 1 page
- Resume/CV – maximum 2 pages
- A table summary of clinical placements with the placement dates and type
- Certified copy of your latest academic transcript with grading key, or eEquals transcript (this does not need to be certified, but please download a copy of your transcript as we can't access web links)
- 2 x clinical appraisals most relevant to your preferred pathway as outlined in the following table:

Pathway	Acute	Mental Health	Midwifery
General	X 2 (most recent)		
Eastern Health / Alexandra District Health Pathway	X 2 (most recent)		
Mental Health	X1 (most recent)	X1	
Blended Mental Health	X1 (most recent)	X1	
Midwifery			X2
Blended Midwifery			X2

Applications - Things to Remember

Important things to remember in your Graduate Application:

- Please address your application to:
Ms Michelle Rutherford, Director – Learning & Teaching
- It is not a requirement to have attended a placement with Eastern Health to apply for a graduate position.
- All documentation should be scanned and uploaded to your online application in eh.mercury. You can make changes to the documents provided on eh.mercury up until the job advertisement closes.
- Paper Transcripts must be certified, eEquals Transcripts must be downloaded and the file saved in your eh.mercury application.
- We do not accept paperwork which is posted or emailed directly to us.
- You will be asked to upload an ID photo as a part of your online application. This photo can be taken on a smartphone, but please ensure it meets the following criteria:
 - Clear photo of head and shoulders only facing the camera
 - Photo should be taken against a plain white background
 - Photo should be .JPEG or .JPG file format

Frequently Asked Questions

What if I don't have a non-clinical referee?

We ask you to provide 2 referees – 1 x clinical and 1 non-clinical (employer/volunteer). If you do not have a non-clinical reference, please provide us with 2 x clinical referees.

Can I apply for more than 1 pathway?

Of course! Please just remember that each pathway you apply for will count toward your preferences in PMCV/APS computer match.

Will I need to submit more than 1 application if I preference multiple pathways?

No – If you are applying for more than 1 Eastern Health pathway, you will only need to submit 1 application in EH.Mercury, we suggest mentioning this in your cover letter. When submitting your application, the selection criteria will also ask you to nominate your preferred pathway. This helps us determine the most suitable team to review your application.

Do I get to select which intake I would like to be a part of?

Your intake may depend on when your final results are released and which pathway you are interested in as some pathways have specific intakes. If you are successful, we will ask you to complete a survey where you can provide us with your preferences prior to allocating your intake and site.

How many positions are available in Eastern Health's Graduate Program?

We have over 200 positions in total.

Will I get to choose which hospital I work at Eastern Health?

All successful applicants are employed by Eastern Health, meaning you may be allocated to any Eastern Health site. Our Transition to Practice team take into consideration home location & preferences. You may rotate to different sites during your Graduate Year.

FAQs continued

What accommodation options are there in Alexandra for the Eastern Health/Alexandra District Health pathway?

During your 6 months at Alexandra, fully furnished accommodation is available for the Graduate Nurses at a subsidised cost. This is located next door to the hospital site.

How do I apply for the Eastern Health/Alexandra District Health pathway?

You will still apply through PMCV, however applications will be sent directly to Alexandra District Health. More information can be found on their website <https://adh.org.au> under Careers – Graduate Nurse Programs.

How many hours do Graduates work per week?

We offer 0.8 EFT to Graduates, which means you work 8 shifts per fortnight. This helps to maintain work/life balance throughout your Graduate year.

Do you offer Post-Graduate opportunities?

Yes! Visit Eastern Health's careers page and find information about Transition to Specialty Practice (TSPs) and Post Graduate Studies under [Ongoing Education](#)

Where can I find more information?

- Visit Eastern Health's careers page and find information under [Graduate Nurse & Midwifery Program](#)
- Follow us on Instagram and Facebook [@easternhealthgraduates](#)
- Join one of our Information Sessions.

Details can be found on our website and social media pages.

Information Sessions

Each year Eastern Health hosts information sessions providing an overview of:

- Our graduate program
- Recruitment processes including support with application and interview tips
- Opportunities for you as an Eastern Health employee

Information sessions are a great chance for you to meet and ask questions with the Transition to Practice team.

Tickets are free, but do need to be pre-booked via Eventbrite. Follow us on both Instagram and Facebook [@easternhealthgraduates](#) for further details as they become available.



Contact Us

For further information contact our admin team at -

Phone: 03 9895 3372

Email: TTP.admin@easternhealth.org.au

Follow us for the latest updates from Transition to Practice



[@easternhealthgraduates](https://www.instagram.com/easternhealthgraduates)



<https://www.facebook.com/easternhealthgraduates>



@EASTERNHEALTHGRADUATES