

Eastern Health 

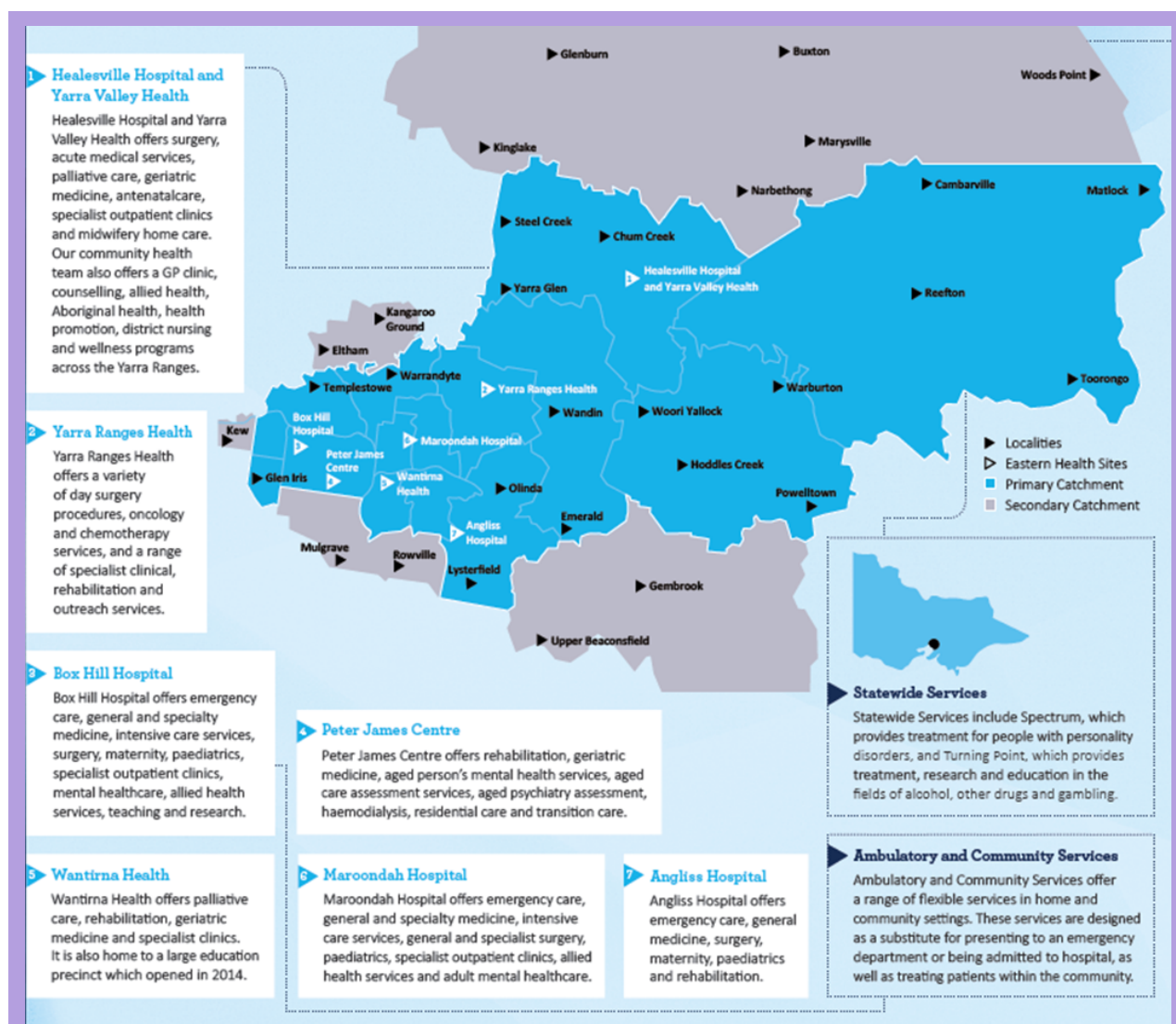
# Enrolled Nurse Graduate Programs



# A Snapshot of Eastern Health

Eastern Health is one of Melbourne's largest metropolitan public health services.

We provide a range of emergency, surgical, medical and general healthcare services, including maternity, palliative care, mental health, drug and alcohol, residential care, community health and statewide specialist services to people and communities that are diverse in culture, age, socio-economic status, population and healthcare needs.



# About our Graduate Programs

## Pathways and Rotations

Eastern Health offer Enrolled Nurse Graduate Programs in both Pure and Blended pathways.

Pathways	Rotations	Intakes commence
General Nursing	2 x 6 month Rotations	March
Mental Health	2 x 6 month Rotations	March and June
Blended Nursing & Mental Health	2 x 6 month Rotations	March

## Contracts

Graduate contracts are 0.8 EFT (8 days a fortnight) to maintain work-life balance.

Permanent ongoing employment is offered to all graduates on completion.

## Professional Development and Other Opportunities

- 2 x Orientation Days
- Variety of study days focusing on:
  - Quality and safety tailored to each stream
  - Professional growth and development
  - Reflective practice
- Transition to Practice Graduate Representative Committee

# Information Session

---

Our upcoming information session will be online and will inform you about:

- Our Enrolled Nurse graduate program
- Recruitment processes including support with your application and interview tips
- Opportunities for you as an Eastern Health employee.

## **Eastern Health Mental Health Transition to Practice/Graduate Enrolled Nurse: Information session**

**Wednesday, 6th April 2022**

**5:00 PM (Melbourne time)**

This is a great chance for you to meet and ask questions with the Transition to Practice team. Tickets are free, but do need to be pre-booked via Eventbrite.

Follow us on social media [@easternhealthgraduates](#) for booking details for this and further events.

# Contact Us

For further information contact our admin team at -

Phone: 03 9895 3372

Email: [TTP.admin@easternhealth.org.au](mailto:TTP.admin@easternhealth.org.au)

Follow us on Instagram and Facebook for the latest updates from  
Transition to Practice

[@easternhealthgraduates](#)



@EASTERNHEALTHGRADUATES